

**IMPORTANT  
INSTALLATION INSTRUCTIONS**  
Part# INST-WDYS-TWISTSCREW-2

**WARRANTY REGISTRATION**

» **Confirm Your Warranty**  
Your prompt product registration confirms your right to the protection available under the terms and conditions of the Woody's Limited Warranty.  
» **Visit [www.WoodysTraction.com/warranty-registration](http://www.WoodysTraction.com/warranty-registration)**  
Submit your warranty registration online. To complete the form, you must have the **warranty registration number**, located below, along with your name, complete address, phone number, and purchased product name with date and location of the purchase. You can also submit your warranty information by emailing or mailing your warranty registration number with the information listed above to:  
**International Engineering & Manufacturing, Inc.**  
6054 North Meridian Rd.  
Hope, Michigan 48628  
Email: [woodys@wiem.com](mailto:woodys@wiem.com)

**WARRANTY REGISTRATION #**






**CONTACTING US & TECHNICAL ASSISTANCE**

We have experienced technicians to assist you.  
For a prompt response log on to  
<http://woodystraction.com/ask-the-experts>.  
Office Hours: 8:00 a.m. - 4:30 p.m. EST, Monday - Friday  
Phone: 989-689-4911 | Fax: 989-689-4910  
Email: [woodys@wiem.com](mailto:woodys@wiem.com)

**IMPORTANT  
Tire Air Pressure**  
Before installing Woody's® Twist™ screws, check your vehicle owner's manual to confirm your tire PSI is at the manufacturer's recommended pressure.



**Woody's® Twist™ Specifics**

	Overall Length	Carbide Pin	Hex Size	Thread Diameter	Additional Specifications	Usage (based on tread/lug height, may vary)	Installed Depth	Lug Height Range
<b>Grip-It™ WST-0413</b> 	0.512" [13mm]	0.087" [2.2mm]	0.157" [4mm]	0.137" [3.5mm]	Carbide tip, Zinc coated	Bicycles, Footwear, Mountain/Fat Bikes, Motorcycles, Snow Blower, Mini Loader	0.443" [11mm] - 0.472" [12mm]	0.472"+ [12.0mm+]
<b>Attack™ WST-0618</b> 	0.709" [18mm]	0.122" [3.1mm]	0.236" [6mm]	0.197" [5mm]	Carbide tip, Zinc coated, Coarse serrated threads	Argo, ATV, Buggy, Dirt Bike, Motorcycle, Quads, Side by Side, Snow Blower, UTV, Mini-Loader	0.591" [15mm] - 0.669" [17mm]	0.669"+ [17.0mm+]
<b>Attack™ WST-0625</b> 	0.984" [25mm]	0.122" [3.1mm]	0.236" [6mm]	0.197" [5mm]	Carbide tip, Zinc coated, Coarse serrated threads	Argo, ATV, Bob Cat, Buggy, Dirt Bike, Quads, Side by Side, Snow Blower, UTV	0.866" [22mm] - 0.945" [24mm]	0.945"+ [24.0mm+]
<b>Boss™ WST-0830</b> 	1.181" [30mm]	0.140" [3.55mm]	0.315" [8mm]	0.236" [6mm]	Carbide tip, Zinc coated, Coarse serrated threads	Backhoe Loader, Bob Cat, Groomers, ROV, Skid Loader, Skid Steer, Tractors	1.063" [27mm] - 1.142" [29mm]	1.142"+ [29.0mm+]
<b>Gripper™ WST-1035</b> 	1.300" [33mm]	0.187" [4.75mm]	0.394" [10mm]	0.314" [7.98mm]	Carbide tip, Zinc coated	Backhoe Loader, Bob Cat, Groomers, ROV, Skid Loader, Skid Steer, Tractors	1.250" [31.8mm]	1.250"+ [31.8mm+]

*The NEW Gripper™ 1.300" screw has replaced the 1.250" & 1.500" lengths.*  
**Screw length and quantity is based on the number of lugs and their height, tire size, usage, and horsepower of vehicle. Once these factors are determined, please contact Woody's for the appropriate quantity of Twist™ screws recommended.**  
To measure the lug height, put a straight edge across the two shortest consecutive lugs and measure the distance to the tire surface.

**Limited Warranty Twist™ Tire Screws**  
International Engineering & Manufacturing, Inc. warrants each product manufactured or supplied by it to be free from defects in material and workmanship under use for the purpose for which it is intended. The Company shall not be liable for damage or delays caused by defective materials or workmanship; is limited to the repair or replacement at its factory of defective article or part thereof, which may be returned to the factory, transportation charges, prepaid within one (1) year after delivery to the original purchaser. Proof of purchase is also required. The Company shall be the sole judge of the existence of any defect in the article so returned. No claims for charges incurred in the removal, disassembly or re-installation of such article shall be allowed.

This Warranty shall not cover any article which has been misused, neglected, or damaged by accident or any article which has been altered outside the Company's factory. The Twist™ screw warranty is void if the screws were NOT installed with Woody's® Installation Tool(s) and if user failed to follow the Installation Instructions. This Warranty does not cover carbide pin breakage or pin loss from tire screw wear, tire screw replacement labor or shipping.

The Company shall, in no event be liable for consequential damage or contingent liability arising out of any total or partial failure to function of any article manufactured or sold by it or of any equipment on or in which it is used. Failure of a user to give notice to claim as to defect claimed under the provisions of the Warranty within one (1) year after delivery to original use, such claim shall constitute a waiver by consumer of all claims with respect to goods and equipment.

No express, implied, or statutory warranty other than that herein set forth is made or authorized to be made by the Company. All returned warranties will not be accepted without a return authorization number. Twist™, Attack™, Boss™, Gripper™, and Grip-It™ are trademarks and/or trade names of International Engineering & Mfg, Inc.

**Woody's® Manufacturer Twist™ Screw Warranty Returns**  
Contact our customer service department at [woodys@wiem.com](mailto:woodys@wiem.com), Attn: Customer Service, for a Return Authorization Number. Woody's will NOT accept any returns without this number, which must be visible on the outside of the box. The product will be inspected by a Woody's technician to determine if is defective due to material, quality, or workmanship before a final warranty determination is made. Proof of purchase is required. All returns to the manufacturer are for exchange only.

# Woody's® Twist™ Screw Instructions

**ATTENTION:** before installing Twist™ screws, read and understand all information provided with your screws. Always follow the vehicle or tire manufacturer's instructions regarding tire screw installation and obey your local road regulations concerning tires with screws/studs.

If any of your product instructions are damaged or missing, it is important to download the full instructions from [www.Woody'sTraction.com](http://www.Woody'sTraction.com) or contact Woody's for a printed copy.

## Installation (All applications except footwear)

### Tools Needed:

- » Power Drill
- » Track Marker
- » Woody's® Twist™ Installation Tool
  - » Grip-It™: WST-TOOL-4
  - » Attack™: WST-TOOL-6
  - » Boss™: WST-TOOL-8
  - » Gripper™: WST-TOOL-10

1. Before installing the screws, mark a pattern on the tire using Woody's Track Marker. (Figure 1) Alternate the screw position to create as many scratch lines as possible. Do NOT install in a straight line.
2. Slide the installation tool into the power drill chuck. (Figure 2)
3. Insert the hex of the tire screw into the installation tool until the screw bottoms out in the tool. (Figure 3)
4. Holding the screw in the tool, position the end of the screw firmly against the tire where you have a screw position marked. (Figure 4)
5. Firmly apply pressure **straight down** while using the drill to **slowly** rotate the screw into the lug until the shoulder of the tool is resting snug to the tire. (Figure 5) Do not continue to tighten screw once the tool shoulder is in contact with the tire.
6. Remove tool from the screw.
7. Repeat steps 3-6 until screws are installed in all pattern markings.

The exposed height of the installed screw is determined by proper use of the appropriate installation tool. When the shoulder of the tool meets the lug surface, your screw is at the correct installed depth.

Screws can add noticeable weight to each tire, depending on the quantity installed. ALWAYS test drive the vehicle for several miles at low speeds to determine how handling is affected by screws.

## Installation (Grip-It™ Screws - Footwear Application)

### Tools Needed:

- » Power Drill
- » Track Marker
- » Woody's® Twist™ Installation Tool for Grip-It™ Screws: WST-TOOL-4

1. Always confirm sole is an appropriate depth before installing Woody's® Grip-It™ screws.
2. Before installing screws, mark a pattern on the sole using Woody's® Track Marker. (Figure 6)
3. Place a screw, hex first, into the installation tool and position end of screw firmly against a thick knob on footwear's sole. (Figure 7)
4. Firmly apply pressure **straight down** while slowly rotating the screw into the tool is flush with the rubber.
5. Remove tool from the screw.
6. Repeat steps 3-5 until screws are installed in pattern markings.

Twist™ Screws may come out if they are not adequately sunk into the rubber. For optimum traction, install screws in a staggered pattern (not in a straight line) to maximize contact with the terrain.

**CAUTION:** Over-tightening may cause studs to penetrate entirely through soles. Footwear installed with screws should only be used outdoors to avoid damage to floors, truck beds, and other surfaces. Operation on smooth concrete and other hard surfaces with footwear screws may cause slipping.



Figure 1

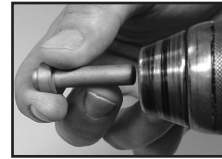


Figure 2

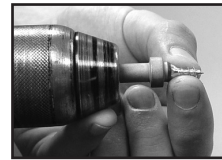


Figure 3



Figure 4



Figure 5



Figure 6

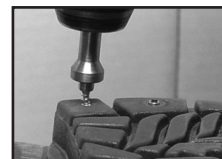


Figure 7

## Removal

### Tools Needed:

- » Power Drill
- » Woody's® Twist™ Installation Tool
  - » Grip-It™: WST-TOOL-4
  - » Attack™: WST-TOOL-6
  - » Boss™: WST-TOOL-8
  - » Gripper™: WST-TOOL-10

1. Attach the installation tool onto the power drill.
2. Place the installation tool over the screw to be removed.
3. Apply firm pressure down on the head of the screw with the installation tool.
4. Set the drill to reverse, and slowly remove the screw.

### Woody's® Twist™ Warnings

You must read the instructions provided before installing Twist™ screws in your vehicle tires, tracks, or footwear. Always follow the vehicle or tire manufacturer's instructions regarding tire screws. Consult your owner's manual.

Throughout these warnings, the term Personal Injury - includes but is not limited to bruises, contusions, lacerations, broken bones, infection, loss of sight or hearing, limb amputation, and death.

The term Damage to Vehicle or Tire and Personal Property - includes but is not limited to damage to any part of the vehicle, damage to the tire and other structural and mechanical components of the vehicle that can occur. Damage could also occur to nearby objects and structures such as vehicles and buildings.

Keep in mind that the installation of Woody's® Twist™ screws can dramatically affect the performance of the vehicle as it relates to acceleration, deceleration, and steering. It is extremely important to follow the installation instructions and to operate the vehicle in a very careful and alert manner.

Personal injury or vehicle and property damage can occur if the vehicle equipped with Woody's® Twist™ screws, engages with stones, rocks, pieces of wood, clumps of ice, or other items that could become projectiles. Also, if a screw becomes snagged, the screw itself could become a projectile.

Woody's recommends that vehicles equipped with Twist™ screws not be operated on hard surfaces such as asphalt and concrete. If it is unavoidable to cross or drive on such surfaces, cross or drive only at a steady, slow pace just above the speed necessary to engage the drive mechanism. Follow your local road regulations concerning driving tires with screws/studs on paved roads and trails.

Woody's Grip-It™ Screw installed in any foot wear should only be used outdoors. Screws may damage or mar floors, truck beds and other surfaces. Operation on smooth concrete and other hard surfaces with footwear screws may cause slipping.

In order to reduce the risk of personal injury or vehicle and property damage, it is extremely important to read all literature associated with Woody's® Twist™ screws, and follow directions relating to tire screw patterns and screw quantity. It is also important to properly maintain the vehicle and its tires and replace a tire at the first sign of a break, crack, cut, hole, or presence of dry rot. Do not install or replace Woody's® Twist™ screws in tires that show any of these conditions.

Installation tools, when properly used, will determine the correct exposed height of the installed screw. If protrusion exceeds this height, damage to tire(s) and other structural and mechanical components of the vehicle can occur.