

# Snow Flap Strap Kit Installation Instructions

You must read these instructions thoroughly before installing the snow flap straps.

## Quantity Kit Contents:

2	3/16" Large Head Rivets
5	1/4"-20 Thread Button Head Cap Screws
5	1/4" Nuts
10	Washers
3	Straps 24" long with a hole every 1.25"

## Tools Needed:

Hand Drill with 1/4" and/or 3/16" Drill Bits  
Box End Wrench - 7/16"  
Rivet Gun  
Utility Knife

## First 24" Preholed Strap Installation

- 1) Beginning on either side of the snowmobile, determine the placement of the strap by finding the points on the running board and the snow flap where the strap will extend between them allowing at least 2" of movement in the snow flap. Mark that point on the running board (fig. 1).

**If the running board is encapsulated in plastic use the 3/16" rivets supplied to attach the strap. Reference section b.) in steps 2 and 3 of the following instructions.**

**If it is not, use the nuts, washers and bolts supplied. Reference section a.) in steps 2 and 3 of the following instructions.**

- 2) a.) At this point, using a hand drill with a 1/4" drill bit, make a hole for the nut and bolt in the running board (fig. 2).  
b.) To install the rivet a 3/16" drill bit is required (fig. 2).
- 3) a.) Insert a bolt with a washer through the strap from the underside of the running board . Install the other washer and nut from the top of the running board and tighten (fig. 3).  
b.) If the running board is encapsulated in plastic, insert the rivet through the strap from the underside of the running board and tighten using the rivet gun (fig. 3). **NOTE: After installation of the rivet, verify that the rivet tightly secures the strap to the running board.**
- 4) Extend the strap to the edge of the underside of the snow flap to find the point where at least 2" of movement in the snow flap can be achieved. Mark that point on the snow flap where the hole needs to be drilled (fig. 4).
- 5) At the mark on the snow flap, use a hand drill with a 1/4" drill bit make a hole in the snow flap (fig. 5).
- 6) Align the hole on the strap to the hole in the snow flap. Insert a bolt and a washer through the snow flap and the strap from the outside of the flap and install the other washer and nut on the inside of the snow flap, then tighten. Use a utility knife to remove the excess strap below the nut and washer to prevent it from being caught by any moving parts of the snowmobile (fig. 6).

Result of steps 4 through 6 (fig. 7).



5



6



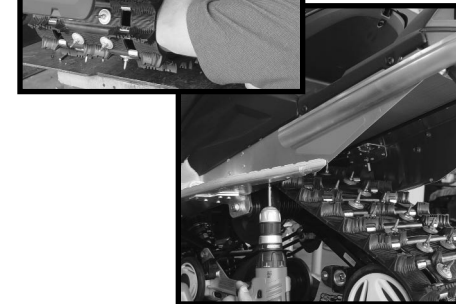
7



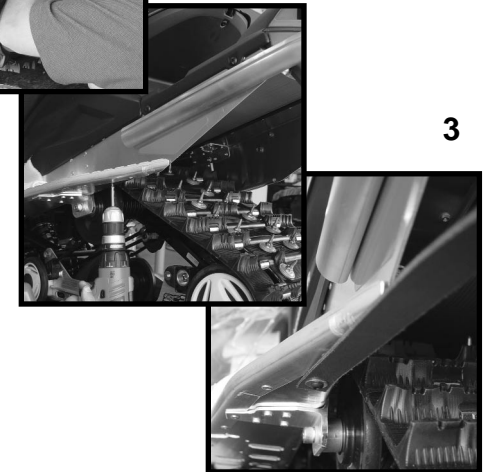
The snow flap should remain at the stock angle and form.



1



2



3

4



## Second 24" Preholed Strap Installation

7) Install the second strap on the other side of the snowmobile by repeating steps 1 through 6.

## Reinforcement Strap Installation

The reinforcement strap will help prevent the snow flap from being pulled into the track when the snowmobile is in reverse or when unloading it from a trailer.

8) Place the strap around the rear bumper. With the snow flap at stock angle and form, find the horizontal center of the snow flap (fig. 9). *The strap placement may not be in the vertical center.* The point where the ends of the strap meet at the horizontal center of the snow flap is where the strap will be installed. Mark that point on the snow flap (fig. 8).

9) Use a hand drill with a 1/4" drill bit to make a hole at that mark.

10) With the strap still looped around the bumper, align the two precut holes on either end of the strap with the hole you have created in the snow flap. Insert a bolt with a washer through both strap ends and the snow flap from the outside of the snow flap. Install a nut and washer on this bolt and tighten. Use a utility knife to remove any excess strap below the nut and washer. The snow flap should still have at least 2" of movement (fig. 9).

11) End Result: one strap will be attached on each side of the snowmobile affixing the snow flap to the chassis. The third will be looped around the center of the snowmobile bumper and attached to the horizontal center of the snow flap (fig. 10).

**NOTE: The installation of the Snow Flap Strap Kit is not a substitute for a snowmobile stand.**

**▲ WARNING**  
 • Only spin track at lowest possible speed whenever  
 off the ground and always use a snowmobile stand.  
 Broken track or debris could be projected with great force  
 which could sever legs, cause serious injuries or death.



**▲ AVERTISSEMENT**  
 • NE JAMAIS SE TENIR DERRIÈRE ou près d'une chenille qui tourne.  
 • Faire tourner la chenille seulement à la vitesse la plus basse possible lorsque  
 soulevée de terre, et toujours utiliser un support pour montage. Une chenille  
 brisée ou des débris pourraient être projetés avec force et pourraient ainsi  
 sectionner une jambe ou causer d'autres blessures sérieuses, voire la mort.

**Closed Course Racing Competitors - follow these instructions to fulfill ISR snow flap strapping requirements.**



INTERNATIONAL ENGINEERING & MANUFACTURING, Inc.  
 6054 N Meridian Road • Hope MI 48628 • 989-689-4911  
 www.woodysracing.com • E-mail: woodys@wiem.com  
 Copyright © 2004, International Engineering & Mfg., Inc. All rights reserved.



8



Horizontal  
Center

9



10